

FLAT BOTTOM FLASKS

with conical ground socket, borosilicate glass 3.3.

Capacity	Socket size	Code	Pack of
25 ml	NS 14 / 23	LMS 61212201	10
50 ml	NS 14 / 23	LMS 61212202	10
50 ml	NS 19 / 26	LMS 61212204	10
50 ml	NS 24 / 29	LMS 61212207	10
50 ml	NS 29 / 32	LMS 61212215	10
100 ml	NS 14 / 23	LMS 61212203	10
100 ml	NS 19 / 26	LMS 61212205	10
100 ml	NS 24 / 29	LMS 61212208	10
100 ml	NS 29 / 32	LMS 61212216	10
250 ml	NS 19 / 26	LMS 61212206	10
250 ml	NS 24 / 29	LMS 61212209	10
250 ml	NS 24 / 40	LMS 61212212-40	10
250 ml	NS 29 / 32	LMS 61212217	10
500 ml	NS 24 / 29	LMS 61212210	10
500 ml	NS 24 / 40	LMS 61212213-40	10
500 ml	NS 29 / 32	LMS 61212218	10
1000 ml	NS 24 / 29	LMS 61212211	10
1000 ml	NS 24 / 29	LMS 61212214-40	10
1000 ml	NS 29 / 32	LMS 61212219	10
1000 ml	NS 45 / 40	LMS 61212221	10
2000 ml	NS 45 / 40	LMS 61212222	10



ROUND BOTTOM FLASKS

with conical ground socket, borosilicate glass 3.3.

Capacity	Socket size	Code	Pack of
10 ml	NS 14 / 23	LMS 61211200	10
25 ml	NS 14 / 23	LMS 61211201	10
25 ml	NS 19 / 26	LMS 61211205	10
50 ml	NS 14 / 23	LMS 61211202	10
50 ml	NS 19 / 26	LMS 61211206	10
50 ml	NS 24 / 29	LMS 61211210	10
50 ml	NS 29 / 32	LMS 61211216	10
100 ml	NS 14 / 23	LMS 61211203	10
100 ml	NS 19 / 26	LMS 61211207	10
100 ml	NS 24 / 29	LMS 61211211	10
100 ml	NS 29 / 32	LMS 61211217	10
250 ml	NS 14 / 23	LMS 61211204	10
250 ml	NS 19 / 26	LMS 61211208	10
250 ml	NS 24 / 29	LMS 61211212	10
250 ml	NS 24 / 40	LMS 61211212-40	10
250 ml	NS 29 / 32	LMS 61211218	10
250 ml	NS 34 / 35	LMS 61211228	10
250 ml	NS 45 / 40	LMS 61211236	10
500 ml	NS 19 / 26	LMS 61211209	10
500 ml	NS 24 / 29	LMS 61211213	10
500 ml	NS 24 / 40	LMS 61211213-40	10
500 ml	NS 29 / 32	LMS 61211219	10
500 ml	NS 34 / 35	LMS 61211229	10
500 ml	NS 45 / 40	LMS 61211237	10
1000 ml	NS 24 / 29	LMS 61211214	10
1000 ml	NS 24 / 40	LMS 61211214-40	10
1000 ml	NS 29 / 32	LMS 61211220	10
1000 ml	NS 34 / 35	LMS 61211230	10
1000 ml	NS 45 / 40	LMS 61211238	10
2000 ml	NS 24 / 29	LMS 61211215	10
2000 ml	NS 29 / 32	LMS 61211221	10
2000 ml	NS 34 / 35	LMS 61211231	10
2000 ml	NS 45 / 40	LMS 61211239	10



JIPO PORCELAIN

CRUCIBLES, LOW FORM

Ø (mm)	H (mm)	Vol (ml)	Code	Pack of
30	19	5	JIP 100301	5
35	22	10	JIP 100351	5
40	25	17	JIP 100401	5
45	28	21	JIP 100451	5
50	32	34	JIP 100501	5
60	38	62	JIP 100601	5
70	44	91	JIP 100701	5



CRUCIBLES, MIDDLE FORM

Ø (mm)	H (mm)	Vol (ml)	Code	Pack of
30	25	10	JIP 200301	5
35	28	12	JIP 200351	5
40	32	20	JIP 200401	5
45	36	30	JIP 200451	5
50	40	45	JIP 200501	5
60	48	80	JIP 200601	5
70	56	120	JIP 200701	5
80	82	200	JIP 200801	5



CRUCIBLES, HIGH FORM

Ø (mm)	H (mm)	Vol (ml)	Code	Pack of
30	38	15	JIP 300301	5
35	44	26	JIP 300351	5
40	50	35	JIP 300401	5
45	56	50	JIP 300451	5
50	62	72	JIP 300501	5
60	75	130	JIP 300601	5



LIDS FOR CRUCIBLES

Ø (mm) crucible	Ø (mm) lid	Code	Pack of
30	34	JIP 000301	5
35	39	JIP 000351	5
40	44	JIP 000401	5
45	49	JIP 000451	5
50	54	JIP 000501	5
60	64	JIP 000601	5
70	74	JIP 000701	5
80	84	JIP 000801	5



GOOCH CRUCIBLES

Ø (mm)	H (mm)	Vol (ml)	Code	Pack of
30	36	17	JIP 234101	5
35	43	25	JIP 234301	5
39	49	35	JIP 234401	5
60	71	120	JIP 234501	5



FILTER CRUCIBLES

with porous base



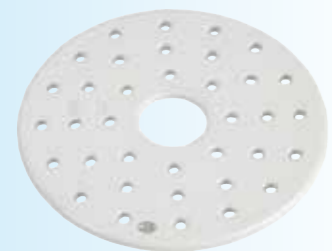
H (mm)	Vol (ml)	Porosity	Code	Pack of
28	8	P1 = 6 μ	JIP 400256	2
28	8	P2 = 7 μ	JIP 400257	2
28	8	P2 = 8 μ	JIP 400258	2
35	15	P1 = 6 μ	JIP 400306	2
35	15	P2 = 7 μ	JIP 400307	2
35	15	P2 = 8 μ	JIP 400308	2
40	25	P1 = 6 μ	JIP 400356	2
40	25	P2 = 7 μ	JIP 400357	2
40	25	P2 = 8 μ	JIP 400358	2
43	35	P1 = 6 μ	JIP 400406	2
43	35	P2 = 7 μ	JIP 400407	2
43	35	P2 = 8 μ	JIP 400408	2
50	50	P1 = 6 μ	JIP 400456	2
50	50	P2 = 7 μ	JIP 400457	2
50	50	P2 = 8 μ	JIP 400458	2

BUECHNER FUNNELS



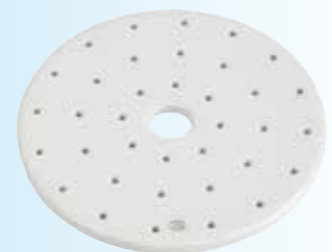
Nom. size	Stem length	Hole \varnothing	Code	Pack of
45	43	1	JIP 237101	1
55	64	1	JIP 237201	1
70	64	1	JIP 237301	1
90	71	2	JIP 237401	1
110	83	2	JIP 237501	1
125	85	2	JIP 237601	1
150	96	2	JIP 237701	1
185	117	2	JIP 237801	1
240	117	2	JIP 237901	1
270	130	2	JIP 237921	1
320	133	2	JIP 237991	1

DESICCATOR PLATES, ACC. TO CSN



\varnothing (mm)	for Desic.	Code	Pack of
90	100	JIP 238101	1
140	150	JIP 238331	1
189	200	JIP 238521	1
241	250	JIP 238821	1
290	300	JIP 238991	1

DESICCATOR PLATES, ACC. TO DIN



\varnothing (mm)	for Desic.	Code	Pack of
90	100	JIP 138101	1
140	150	JIP 138201	1
190	200	JIP 138301	1
235	250	JIP 138401	1
280	300	JIP 138501	1

EVAPORATION DISH, ROUND BOTTOM

deep form, with lip

\varnothing (mm)	H (mm)	Vol (ml)	Code	Pack of
42	19	10	JIP 206001	5
51	24	24	JIP 206101	5
61	28	36	JIP 206121	5
77	33	72	JIP 206201	5
81	38	107	JIP 206221	5
94	42	140	JIP 206301	5
103	45	190	JIP 206321	5
125	50	285	JIP 206411	5
132	55	390	JIP 206421	5
138	61	500	JIP 206501	5
160	64	580	JIP 206611	5
170	74	920	JIP 206621	1
200	80	1000	JIP 206721	1
202	86	1500	JIP 206801	1
320	140	6000	JIP 206991	1



EVAPORATION DISH, ROUND BOTTOM

semideep form, with lip

\varnothing (mm)	H (mm)	Vol (ml)	Code	Pack of
72	26	41	JIP 207101	5
83	27	62	JIP 207201	5
96	30	110	JIP 207301	5
110	37	160	JIP 207401	5
117	41	215	JIP 207421	5
127	42	240	JIP 207501	5
142	46	325	JIP 207521	5
154	50	420	JIP 207601	5
170	55	558	JIP 207701	5



EVAPORATION DISH, FLAT BOTTOM

with lip

\varnothing (mm)	H (mm)	Vol (ml)	Code	Pack of
54	22	22	JIP 274101	5
70	30	62	JIP 274121	5
86	33	93	JIP 274201	5
98	40	154	JIP 274301	5
112	50	265	JIP 274401	5
126	53	330	JIP 274501	5
145	55	450	JIP 274601	5
151	63	620	JIP 274701	5
169	68	800	JIP 274801	1
195	74	1200	JIP 274901	1
254	105	3000	JIP 274991	1



MORTARS WITH LIP, GLAZED



∅ (mm)	H (mm)	Vol (ml)	Code	Pack of
51	32	25	JIP 211001	5
56	37	30	JIP 211101	3
63	42	70	JIP 211111	3
76	46	75	JIP 211121	2
83	50	110	JIP 211201	2
90	56	160	JIP 211221	1
105	64	220	JIP 211301	1
125	71	400	JIP 211321	1
139	82	500	JIP 211401	1
150	90	650	JIP 211501	1
180	104	1000	JIP 211601	1
224	127	2250	JIP 211701	1
268	150	4300	JIP 211801	1

PESTLES, GLAZED



∅ (mm)	length (mm)	Code	Pack of
14	54	JIP 213001	5
24	115	JIP 213101	5
30	135	JIP 213201	3
36	150	JIP 213301	2
42	175	JIP 213401	1
55	210	JIP 213501	1
74	250	JIP 213601	1
85	280	JIP 213701	1
101	370	JIP 213801	1

MORTARS WITH LIP, ROUGH



∅ (mm)	H (mm)	Vol (ml)	Code	Pack of
51	32	25	JIP 211000	5
56	36	30	JIP 211100	3
63	41	70	JIP 211110	3
76	45	75	JIP 211120	2
83	50	110	JIP 211200	2
90	56	160	JIP 211220	1
105	64	220	JIP 211300	1
125	71	400	JIP 211320	1
139	82	500	JIP 211400	1
150	90	650	JIP 211500	1
180	104	1000	JIP 211600	1
224	127	2250	JIP 211700	1
268	150	4300	JIP 211800	1

PESTLES, ROUGH



∅ (mm)	length (mm)	Code	Pack of
14	54	JIP 213000	5
24	115	JIP 213100	5
30	135	JIP 213200	3
36	150	JIP 213300	2
42	175	JIP 213400	1
55	210	JIP 213500	1
74	250	JIP 213600	1
85	280	JIP 213700	1
101	370	JIP 213800	1