

BOECO STEREO MICROSCOPE MODEL BS-80



Specification BS-80:

Optical head	Binocular head inclined at 45° Interpupillary Distance 55 - 75 mm Eyepiece dioptic adjustment range ± 5D
Working distance:	100 mm
Eyepiece:	WF10X/23 eyepieces
Stereo Optics:	Objectives 2x & 4X in revolving nosepiece
Illumination:	2-way LED transmission and reflecting illumination Top Illuminator 1W, Bottom Illuminator 0,5W
Stage Plate:	Frosted glass stage plate and black/white reversible stage plate
Base:	Stable 262 x 185 mm base, fitted with anti-skid rubber feet
Dimensions:	262 (L) x 262 (L) x 315 (H) mm, Netweight 4,80
Packing:	380 x 340 x 410 mm, Grossweight 6,40 kg

Code	Description
BOE 3800.000	BS-80, AC 110-240V, 50-60Hz, EURO Plug
BOE 3800.001	BS-80, AC 110-240V, 50-60HZ, US Plug

optional

Code	Description
BOE 3460.020	Wide Field Eyepiece WF 20x/12 w/ diopter adjustment
BOE 4050.002	Auxiliary Objective 2x, for BS-80 and BSZ-405
BOE 4050.007	Auxiliary Objective 0,75x, for BS-80 and BSZ-405

DIGITAL MICROSCOPE CAMERAS

for capture of microscope images and display of real-time live video on a computer screen. Delivered incl. optical relay lens 0,45x, USB 2.0 cable, Eyepiece tube adapter Ø23,2/Ø30 mm and image processing software.



MDCE-5C



HDCE-20C



HDCE-X5 / 90D

Specifications:

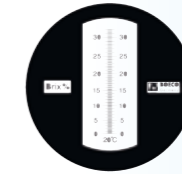
Model:	MDCE-5C	HDCE-20C	HDCE-X5	HDCE-90D
Type:	1.3M pixel	2.0M pixel	5.0M pixel	9.0M pixel
Image Sensor:	1/3,2" CMOS	1/3,2" CMOS	1/2,5" CMOS	1/2,3" CMOS
Pixel size:	5,6	5,6	7,13	7,63
Viewing field:	69%	69%	88%	94%
Diagonal:	2,8µm x 2,8µm	2,8µm x 2,8µm	2,2µm x 2,2µm	1,75µm x 1,75µm
Relay lens:	0,45x	0,45x	0,45x	0,45x
Image format:	1280x1024	1600x1200	2592x1944	3488x2616
SNR:	42,3dB	42,3dB	40dB	37,4dB
Dynamic Range:	71dB	71dB	66,5dB	62,7dB
Exposure Time:	approx. 20s -1/1000s	approx. 20s -1/1000s	approx. 15s -1/1500s	approx. 1-500ms
Effective No.:	10bit, on chip	10bit, on chip	12bit, on chip	12bit on chip
Sensitivity:	1,0 V/lux-sec (550nm)	1,0 V/lux-sec (550nm)	0,53 V/lux-sec (550nm)	0,44 V/lux-sec (550nm)
Out Put:	Auto/Manual Exposure			
White Balance:	Auto/Manual White Balance			
Connecting Mode:	Insert it into Eyepiece Tube of Microscope directly or using standard C mount			
Image Output:	USB 2.0			
Working Temp.:	-30°C - 70°C			
Windows System:	Windows 2000/XP/Vista/Win 7/ (Win 8 only MDCE-5C and HDCE-20C), 32bit or 64bit			
Max OS X:	Support, driver free, with MAC's own native image software like Photobooth or IChat you can take pictures and recordvideo with the camera. (Not valid for HDCE-90D)			
Image software:	ScopelImage (only Windows) (7 languages)			

Code	BOE 1800.805	BOE 1800.806	BOE 1800.811	BOE 1800.819
------	--------------	--------------	--------------	--------------

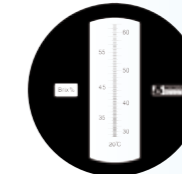
REFRACTOMETER

BOECO HAND REFRACTOMETER

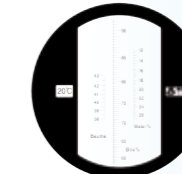
Code	Description
BOE 30103	Saccharic Concentration 0-32 % Resolution: 0,2 %



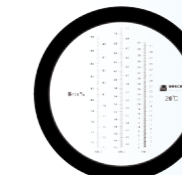
Code	Description
BOE 30104	Saccharic Concentration 28-62 % Resolution: 0,2 %



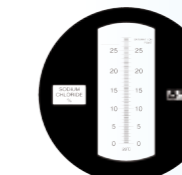
Code	Description
BOE 30106	Saccharic Concentration 58-90% 58-90% Brix, 38°-43°Be', 17-27% water Resolution: 0,5 % Brix, 0,5° Be', 1% water (Sugar content, Baume and Water content)



Code	Description
BOE 30107	Saccharic Concentration 0-90 % (3 ranges) 0-42%, 42-71%, 71-90% Resolution: 0,2 %



Code	Description
BOE 30202	Salinity 0-28 % Resolution: 0,2 %



Code	Description
BOE 30301	Protein in Serum 0-12g/dl / 0,2 g/dl Urine Gravity 1.000-1.040 / 0,002 sg



DIGITAL HAND REFRACTOMETER

with Automatic Temperature Compensation,
Dimension: 135x65x40 mm

Code	Description
BOE 32145	Range: 0-45 % Brix Resolution: 0,1% Accuracy: ± 0,2 % Refractive Index: 1.3330 - 1.4098 Resolution: 0,0001 Accuracy: ± 0,0003
BOE 32195	Range: 0-95 % Brix Resolution: 0,1% Accuracy: ± 0,2 % Refractive Index: 1.3330 - 1.5300 Resolution: 0,0001 Accuracy: ± 0,0002





DIGITAL MINI REFRACTOMETER

which, due to his wide range works perfectly to measure almost any fruit juice, food or drink.

with Automatic Temperature Compensation,

Dimension: 130x49x24 mm (LxWxH)

Code	Description
BOE 32153	Range: 0-53 % Brix Resolution: 0,1% Accuracy: $\pm 0,1$ %

BOECO ABBE REFRACTOMETER

complete with: 1 x set special thermometer (with protective shield) 1 pc. Standard Specimen, 1 x screw driver, 1 x instruction manual.



Specification:

Measuring range of ND:	1.300-1.700
Measuring accuracy of ND (room temperature):	± 0.0002
Minimum scale value for ND:	0.0005
Minimum scale value for the concentration: of sugar content (%)	0.25
Measuring range of the concentration: of sugar content (%)	0-95
Magnification of telescopic system:	2x
Magnification of reading system:	30x
Weight of the instrument (kg):	2,6
Dimensions (mm):	100x200x240

Code	Description
BOE 32200	ABBE Refractometer, with aluminium carrying case

BOECO DIGITAL ABBE REFRACTOMETER

this instrument can widely be used in petroleum, chemical, pharmaceutical, sugar refining and food industries, as well as in related colleges, universities and scientific research institutions for measuring the refractive index ND of transparent or subtransparent liquid or solid substance. This instrument can also be used to measure Brix (BX) of the sugar solution and to correct the affect of temperature on the Brix automatically.

In addition the instrument can display the temperature of the sample.

Complete with: 1 x standard sample (standard block), 1 x inner - hexagon spanner, 3 x Illuminating Bulb, 1 x Plastic Cover Hood, 3 x fuse, 1 x operating instructions

Specification:

Measuring range	
Refractive index ND:	1.300-1.700
Brix BX - TC:	0-95 %
Brix BX:	0-95 %
Measuring accuracy	
Refractive index ND:	± 0.0002
Brix BX - TC:	± 0.1 %
Brix BX:	± 0.1 %
Temperature	
Temperature displaying range:	0-50°C
Correcting range of BX versus temperature:	15-45°C
Weight (kg):	10,0
Dimensions (mm):	330x180x380

Code	Description
BOE 32400	Digital ABBE Refractometer, 220 V with aluminium carrying case
BOE 32401	Digital ABBE Refractometer, 110 V with aluminium carrying case