



LABORATORY PLASTICWARE

 **BOECO**
Germany

REUSABLE PLASTICWARE



GRADUATED CYLINDERS PP

tall, class B per DIN 12681/ISO 6706, highly transparent, with raised scale and ring marks at the primary scale points, hexagonal base

Volume	Code	Tolerance	Height	Pack
10 ml	VIT 646-941	± 0,2 ml	145 mm	12
25 ml	VIT 647-941	± 0,5 ml	170 mm	12
50 ml	VIT 648-941	± 1,00 ml	200 mm	12
100 ml	VIT 649-941	± 1,00 ml	250 mm	12
250 ml	VIT 650-941	± 2,00 ml	315 mm	6
500 ml	VIT 651-941	± 5,00 ml	360 mm	6
1000 ml	VIT 652-941	± 10,00 ml	440 mm	6
2000 ml	VIT 653-941	± 20,00 ml	482 mm	3



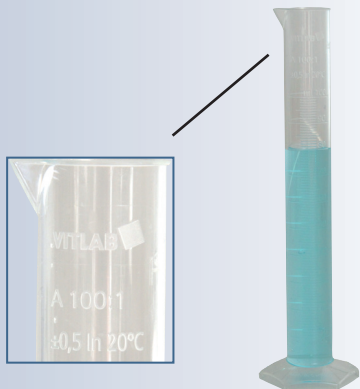
GRADUATED CYLINDERS PP

tall, class B per DIN 12681/ISO 6706, highly transparent, with raised blue scale and ring marks at the primary scale points, hexagonal base

Volume	Code	Tolerance	Height	Pack
10 ml	VIT 646-081	± 0,2 ml	145 mm	12
25 ml	VIT 647-081	± 0,5 ml	170 mm	12
50 ml	VIT 648-081	± 1,00 ml	200 mm	12
100 ml	VIT 649-081	± 1,00 ml	250 mm	12
250 ml	VIT 650-081	± 2,00 ml	315 mm	6
500 ml	VIT 651-081	± 5,00 ml	360 mm	6
1000 ml	VIT 652-081	± 10,00 ml	440 mm	6
2000 ml	VIT 653-081	± 20,00 ml	482 mm	3

GRADUATED CYLINDERS, PMP

Class A per DIN 12681/ISO 6706, crystal clear. Certified compliant With a raised scale and ring marks at the primary scale points, calibrated 'in', hexagonal base. **With laser engraved batch number and the year of manufacture.** The lot certificate supplied bears the batch number and the actual nominal value ascertained under the test conditions. Thermal stress up to 121°C (autoclaving) does not cause tolerance limits to be permanently exceeded



Volume	Code	Tolerance	Graduation	Height	Pack
10 ml	VIT 646-04	± 0,10 ml	0,2 ml	145 mm	2
25 ml	VIT 647-04	± 0,25 ml	0,5 ml	170 mm	2
50 ml	VIT 648-04	± 0,50 ml	1,00 ml	200 mm	2
100 ml	VIT 649-04	± 0,50 ml	1,00 ml	250 mm	2
250 ml	VIT 650-04	± 1,00 ml	2,00 ml	315 mm	2
500 ml	VIT 651-04	± 2,50 ml	5,00 ml	360 mm	1
1000 ml	VIT 652-04	± 5,00 ml	10,00 ml	440 mm	1
2000 ml	VIT 653-04	± 10,00 ml	20,00 ml	482 mm	1

Sample of the lot certificate supplied which bears the batch number and the actual nominal value ascertained under the test condition:

VITLAB [®] Competence in Labware		QUALITÄTSCERTIFIKAT CERTIFICATE OF PERFORMANCE	
Artikel-Nr. / Article No:	64904		
Lot-Nr. / Batch No:	13.02		
Produkt / Product:	Messzylinder / Graduated Cylinder		
Material / Material:	PMP (Polymethylpenten) / PMP (Polymethylpentene)		
Klasse / Class:	A KB		
Toleranz / Tolerance:	± 0,500 ml, DIN 12681 / ISO 6706		
Nennvolumen / Nominal volume:	100 ml		
Mittelwert / Mean value:	99,929 ml		
Standardabweichung / Standard deviation:	± 0,101 ml		
Prüfmittel / Testing devices:			
Waage / Balance:	1, (3200 g/0.001 g) kalibriert bis, calibrated till 10/2013		
Thermometer / Thermometer:	16, (0-50°C) kalibriert bis, calibrated till 08/2013		
Dest. Wasser / Dist. Water:	20°C, < 3µS		
Die Endprüfwerte sind bezogen auf 20 °C, die Prüfung erfolgte gemäß ISO 4787. Die verwendeten Normale sind an die Normale der PTB angeschlossen.	These final test values refer to 20 °C, the test was effected acc. to ISO 4787. The used standards are connected with the standards of the PTB (German Federal Institute of Physics and Metrology).		
Datum / Date:	10.04.2013		
	Prüfer/Operator:		
VITLAB GmbH, Postfach 1272, 83757 Grossostheim, Germany Tel.: +49 (0) 9208 9 77 89-0, Fax: +49 (0) 9208 9 77 89-30, e-mail: info@vitlab.com, www.vitlab.com			

VOLUMETRIC FLASKS (PP)

translucent, individually ring-marked. The tolerances are approx. 20% better than class B according to DIN EN ISO 1042.

To preserve markings, cleaning at no higher temperature than 60°C is recommended.

with screw-caps (PP)

Volume	Code	Height	Thread	Pack
10 ml	VIT 677-891	90 mm	GL 18	6
25 ml	VIT 671-891	115 mm	GL 18	6
50 ml	VIT 672-891	150 mm	GL 18	6
100 ml	VIT 673-891	180 mm	GL 18	6
250 ml	VIT 674-891	235 mm	GL 25	5
500 ml	VIT 675-891	270 mm	GL 25	4
1000 ml	VIT 676-891	310 mm	GL 32	3

with NS stoppers (PP)

Volume	Code	Height	Stopper	Pack
10 ml	VIT 677-941	90 mm	NS 10/19	6
25 ml	VIT 671-941	115 mm	NS 10/19	6
50 ml	VIT 672-941	150 mm	NS 12/21	6
100 ml	VIT 673-941	180 mm	NS 14/23	6
250 ml	VIT 674-941	235 mm	NS 19/26	5
500 ml	VIT 675-941	270 mm	NS 19/26	4
1000 ml	VIT 676-941	310 mm	NS 24/29	3



VOLUMETRIC FLASKS (PMP), CLASS A

With NS stoppers (PP), crystal clear. With ring mark individually calibrated to 'In', Class A tolerances according to DIN EN ISO 1042, **with imprinted lot number and batch certificate**. Thermal stress up to 121°C (autoclaving) does not permanently exceed the tolerance limit. To preserve markings, cleaning at no higher temperature than 60°C is recommended.

Volume	Code	Height	Stopper	Pack
10 ml	VIT 677-04	90 mm	NS 10/19	6
25 ml	VIT 671-04	115 mm	NS 10/19	6
50 ml	VIT 672-04	150 mm	NS 12/21	6
100 ml	VIT 673-04	180 mm	NS 14/23	6
250 ml	VIT 674-04	235 mm	NS 19/26	5
500 ml	VIT 675-04	270 mm	NS 19/26	4
1000 ml	VIT 676-04	310 mm	NS 24/29	3



VOLUMETRIC FLASKS (PMP), OPAQUE

Class A tolerances according to DIN EN ISO 1042, **with imprinted lot number and batch certificate**. UV-absorbent, highly transparent. For storage of light-sensitive substances.

with NS stoppers (PP)

Volume	Code	Height	Stopper	Pack
10 ml	VIT 670-950	90 mm	NS 10/19	2
25 ml	VIT 671-950	115 mm	NS 10/19	2
50 ml	VIT 672-950	150 mm	NS 12/21	2
100 ml	VIT 673-950	180 mm	NS 14/23	2
250 ml	VIT 674-950	235 mm	NS 19/26	2
500 ml	VIT 675-950	270 mm	NS 19/26	2
1000 ml	VIT 676-950	310 mm	NS 24/29	1

with coloured screw caps (PP)

Volume	Code	Height	Thread	Pack
10 ml	VIT 670-040	90 mm	GL 18	2
25 ml	VIT 671-040	115 mm	GL 18	2
50 ml	VIT 672-040	150 mm	GL 18	2
100 ml	VIT 673-040	180 mm	GL 18	2
250 ml	VIT 674-040	235 mm	GL 25	2
500 ml	VIT 675-040	270 mm	GL 25	2
1000 ml	VIT 676-040	310 mm	GL 32	1





ERLENMEYER FLASKS (PP)

wide neck, blue scale, highly transparent, supplied complete with PP screw-caps. NS-stoppers can also be used (not included)



Volume	Code	Grad	Thread GL NS-Stopper	Pack
50 ml	VIT 666-941	10 ml	40 - NS 34/35	6
100 ml	VIT 667-941	20 ml	40 - NS 34/35	6
250 ml	VIT 668-941	50 ml	52 - NS 45/40	6
500 ml	VIT 669-941	100 ml	52 - NS 45/40	6
1000 ml	VIT 670-941	200 ml	52 - NS 45/40	4



BEAKER (PP)

highly transparent, raised graduation.
Autoclavable at 121°C (2bar) acc. to DIN EN 285



Volume	Code	Grad	Height	Pack
25 ml	VIT 606-941	5 ml	50 mm	12
50 ml	VIT 607-941	10 ml	60 mm	12
100 ml	VIT 608-941	10 ml	70 mm	12
150 ml	VIT 609-941	20 ml	80 mm	12
250 ml	VIT 610-941	25 ml	95 mm	6
400 ml	VIT 611-941	50 ml	112 mm	6
500 ml	VIT 618-941	50 ml	118 mm	6
600 ml	VIT 612-941	50 ml	127 mm	6
1000 ml	VIT 614-941	100 ml	147 mm	6
2000 ml	VIT 615-941	200 ml	187 mm	6
3000 ml	VIT 616-941	250 ml	212 mm	4
5000 ml	VIT 617-941	500 ml	247 mm	4



BEAKER (PP)

highly transparent, with easily readable, raised blue scale.
To preserve markings, cleaning at no higher than 60°C is recommended



Volume	Code	Grad	Height	Pack
10 ml*	VIT 605-081	2 ml	35 mm	12
25 ml*	VIT 606-081	5 ml	47 mm	12
50 ml*	VIT 607-081	10 ml	60 mm	12
100 ml	VIT 608-081	20 ml	70 mm	12
150 ml	VIT 609-081	20 ml	80 mm	12
250 ml	VIT 610-081	50 ml	94 mm	6
400 ml	VIT 611-081	50 ml	109 mm	6
500 ml	VIT 618-081	100 ml	122 mm	6
600 ml	VIT 612-081	100 ml	125 mm	6
1000 ml	VIT 614-081	100 ml	149 mm	6
2000 ml	VIT 615-081	200 ml	183 mm	6
3000 ml	VIT 616-081	200 ml	214 mm	4
5000 ml	VIT 617-081	500 ml	248 mm	4

* the 10 ml, 25 ml and 50 ml versions do have a printed blue scale



= Food safe products acc. to EU Regulation No. 10/2011

GRADUATED PITCHERS (PP)

raised scale, highly transparent, Autoclavable at 121°C (2 bar)



Volume	Code	Grad	Height	Pack
50 ml	VIT 446-941	2 mm	70 mm	24
100 ml	VIT 447-941	2 mm	80 mm	24
250 ml	VIT 440-941	5 mm	120 mm	12
500 ml	VIT 441-941	10 mm	133 mm	12
1000 ml	VIT 442-941	10 mm	170 mm	6
2000 ml	VIT 443-941	20 mm	215 mm	6
3000 ml	VIT 444-941	50 mm	242 mm	6
5000 ml	VIT 445-941	100 mm	270 mm	6



GRADUATED PITCHERS (PP)

raised blue scale, highly transparent



Volume	Code	Grad	Height	Pack
50 ml	VIT 446-081	2 mm	70 mm	24
100 ml	VIT 447-081	2 mm	80 mm	24
250 ml	VIT 440-081	5 mm	120 mm	12
500 ml	VIT 441-081	10 mm	133 mm	12
1000 ml	VIT 442-081	10 mm	170 mm	6
2000 ml	VIT 443-081	20 mm	215 mm	6
3000 ml	VIT 444-081	50 mm	242 mm	6
5000 ml	VIT 445-081	100 mm	270 mm	6



SEDIMENTATION CONE

Imhoff-type (SAN), moulded graduations, screw-cap at tip for easy cleaning



Volume	Code	Grad	Division	Pack
1000 ml	VIT 759-91	0 - 2 ml	0,1 ml	3
		2 - 10 ml	0,5 ml	
		10 - 40 ml	1,0 ml	
		40 - 100 ml	2,0 ml	
		100 - 1000 ml	50 ml	



FUNNELS (PP)

transparent



Diameter	Code	Height	Stem Diam.	Pack
30 mm	VIT 408-94	50 mm	1,5 mm	24
30 mm	VIT 410-94	47 mm	4 mm	24
40 mm	VIT 411-94	65 mm	4 mm	24
50 mm	VIT 412-94	85 mm	7 mm	24
75 mm	VIT 413-94	110 mm	6 mm	12
100 mm	VIT 414-94	155 mm	8 mm	12
120 mm	VIT 415-94	180 mm	11 mm	12
150 mm	VIT 416-94	220 mm	15 mm	12





**NARROW NECK BOTTLE
WITH SPRAYING TUBE**

NARROW-NECK / WASH BOTTLES

Narrow neck bottles in polyethylene soft (LD-PE), graduated, natural

Volume	Code	Dimensions D-d-H (mm)	Pack
50 ml	KJS E50	37 - 11 - 87	100
100 ml	KJS E100	47 - 11 - 105	550
250 ml	KJS E250	63 - 18 - 119	252
500 ml	KJS E500	78 - 18 - 152	123
1000 ml	KJS E1000	96 - 20 - 206	61
2000 ml	KJS E2000	120 - 20 - 264	36

Screw caps for wash bottles, with spraying tube (swan-neck)

Diam.	Code	fit to narrow neck bottles:	Pack
18 mm	KJS SR18	E50, E100	25
25 mm	KJS SR25	E250, E500	25
28 mm	KJS SR28	E1000, E2000	25



WIDE-NECK BOTTLES

round, in polyethylene soft (LD-PE), natural

Volume	Code	Dimensions D-d-H (mm)	Pack
50 ml	KJS W50	39 - 24 - 77	100
100 ml	KJS W100	47 - 24 - 94	624
250 ml	KJS W250	63 - 31 - 119	279
500 ml	KJS W500	78 - 39 - 152	141
1000 ml	KJS W1000	96 - 50 - 206	64
1500 ml	KJS W1500	109 - 50 - 226	45
2000 ml	KJS W2000	120 - 50 - 247	33

Screw caps with threads for narrow- and wide-neck bottles (LD-PE)

Diam.	Code	fit to bottles:	Pack
18 mm	KJS V18	E50, E100	200
25 mm	KJS V25	E250, E500	200
28 mm	KJS V28	E1000, E2000	200
32 mm	KJS V32	W50, W100	200
40 mm	KJS V40	W250	100
50 mm	KJS V50	W500	100
65 mm	KJS V65	W1000, W1500, W2000	100



SQUARE BOTTLES, WIDE NECK

made in HD-PE, natural, with black tamper evident cap packed aside

Volume	Code	Dimensions (mm)	Pack
100 ml	KJS 141-0100	52 x 52 mm, height 82 mm	440
250 ml	KJS 141-0250	67 x 67 mm, height 107 mm	215
500 ml	KJS 141-0250	85 x 85 mm, height 129 mm	123
1000 ml	KJS 141-01000	85 x 85 mm, height 210 mm	77

TEST TUBE RACKS

for general purpose, square holes, easy to assemble, white, autoclavable at temperatures up to 121°C.

Dimension: 246 x 104 x 64 mm



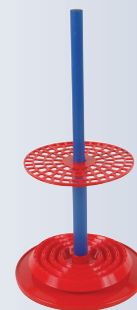
Tube Ø	Code	Capacity
13	BOE 290131	90
16	BOE 260161	60
20	BOE 240201	40
25	BOE 224251	24
30	BOE 221301	21

PIPETTE RACK, PP

Rotary model for 94 pipettes of different sizes, autoclavable at temperatures up to 121°C.

Code

BOE 194



MAGNETIC PTFE ENCAPSULATED STIRRING BARS

cylindrical, smooth round profile, universal application

ØxLmm	Code
4,5 x 12	BOE 114512
6 x 10	BOE 110610
6 x 13	BOE 110613
6 x 20	BOE 110620
6 x 25	BOE 110625
7 x 20	BOE 110720
7 x 30	BOE 110730
7 x 40	BOE 110740
8 x 50	BOE 110850
10 x 60	BOE 111060
10 x 70	BOE 111070
10 x 80	BOE 111080



MAGNETIC PTFE ENCAPSULATED STIRRING BARS

with pivot ring

ØxLmm	Code
6 x 25	BOE 130625
8 x 40	BOE 130840
8 x 50	BOE 130850
10 x 25	BOE 131025
10 x 60	BOE 131060



MAGNETIC STIRRING BAR RETRIEVER, PTFE

Lenght mm	Code
350	BOE 114350



DISPOSABLE PLASTICWARE



BOECO TOP-LINE HIGH QUALITY THIN WALLED PCR-TUBES

PP, Certified to be free of any detectable human DNA, DNase, RNase and PCR-inhibitors.

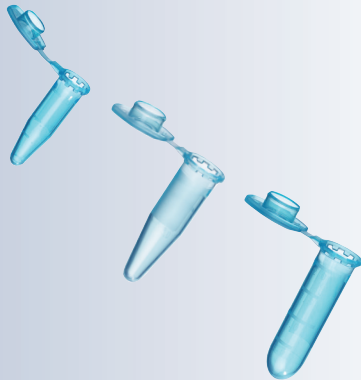
Capacity	Colour	Code	pcs./bag	pcs./case
flat cap				
0,2 ml	natural	BOE 3-010-80-0	1.000	10.000



BOECO TOP-LINE HIGH QUALITY MICRO TUBES

PP, Certified to be free of any detectable human DNA, DNase, RNase and PCR-inhibitors.

Capacity	Colour	Code	pcs./bag	pcs./case
0,5 ml	natural	BOE 3-115-80-0	1.000	10.000
1,5 ml	natural	BOE 3-205-85-0	1.000	8.000
2,0 ml	natural	BOE 3-204-85-0	1.000	8.000



MICROTEST TUBES,

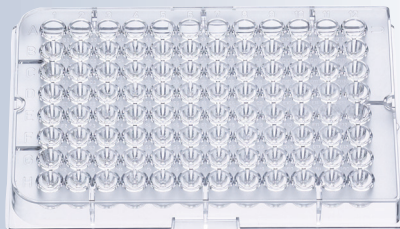
PP, graduated, with cap

SafeFit cap

Capacity	Colour	Code	pcs./bag	pcs./case
0,5 ml	natural	BOE 02.053.0100	1.000	10.000
1,5 ml	natural	BOE 02.063.0100	1.000	8.000
2,0 ml	natural	BOE 02.043.0100	1.000	8.000

EasyFit cap

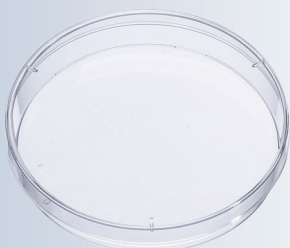
Capacity	Colour	Code	pcs./bag	pcs./case
1,5 ml	natural	BOE 02.023.0100	1.000	8.000
1,5 ml	blue	BOE 02.023.0101	1.000	8.000
1,5 ml	red	BOE 02.023.0102	1.000	8.000
1,5 ml	yellow	BOE 02.023.0103	1.000	8.000
1,5 ml	green	BOE 02.023.0104	1.000	8.000



MICROTEST PLATES

96-well, crystal clear, PS, machinesterile

Type	Code	pcs./bag	pcs./case
U-shape	BOE 05.011.0100	5	100
V-shape	BOE 05.021.0100	5	100
F-shape	BOE 05.031.0100	5	100
Lid	BOE 05.041.0100	5	100



PETRI DISHES

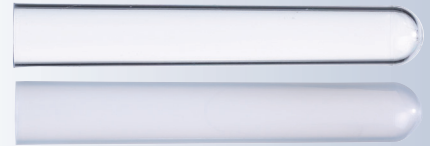
for bacteriology, 94 x 16 mm, crystal clear, PS, machinesterile

Type	Code	pcs./bag	pcs./case
with vents	BOE 04.031.2100	20	480
without vents	BOE 04.041.2100	20	480

CENTRIFUGE TUBES

16x100 mm, round bottom

Capacity	Material	Code	pcs./bag	pcs./case
12 ml	PS	BOE 01.011.0100	1.000	2.000
12 ml	PP	BOE 01.013.0100	1.000	2.000



SEDIMENTATION TUBES

16x105 mm, conical pointed, clear PS

Capacity	Material	Code	pcs./bag	pcs./case
12 ml	PS	BOE 01.021.0100	1.000	2.000



SPECIAL RIBBED STOPPERS

LD-PE, for test tubes with 16 mm diam.

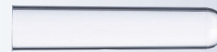
Colour	Material	Code	pcs./bag	pcs./case
natural	LD-PE	BOE 01.604.0100	1000	10.000
blue	LD-PE	BOE 01.604.0101	1000	10.000
red	LD-PE	BOE 01.604.0102	1000	10.000
yellow	LD-PE	BOE 01.604.0103	1000	10.000
green	LD-PE	BOE 01.604.0104	1000	10.000



COAGULOMETER TUBES

12x55 mm, round bottom, clear PS

Capacity	Material	Code	pcs./bag	pcs./case
3,5 / 4 ml	PS	BOE 01.031.0100	1000	5.000



TEST TUBES

12x75 mm, round bottom

Capacity	Material	Code	pcs./bag	pcs./case
4,5 ml	PS	BOE 01.051.0100	1000	4.000



SPECIAL RIBBED STOPPERS

LD-PE, for test tubes with 12 mm diam.

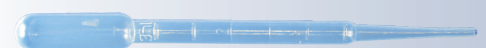
Colour	Material	Code	pcs./bag	pcs./case
natural	LD-PE	BOE 01.624.0100	1000	20.000
blue	LD-PE	BOE 01.624.0101	1000	20.000
red	LD-PE	BOE 01.624.0102	1000	20.000
yellow	LD-PE	BOE 01.624.0103	1000	20.000
green	LD-PE	BOE 01.624.0104	1000	20.000



DISPOSABLE PASTEUR PIPETTES

LD-PE

Cat. No.	Type	pcs./box	pcs./case
BOE 9640001	1,0 ml, graduated, 150 mm, non-sterile	500	5.000
BOE 9640003	3,0 ml, Macro graduated, 150 mm, non-sterile	500	5.000



STERILE DISPOSABLE SEROLOGICAL PIPETTES

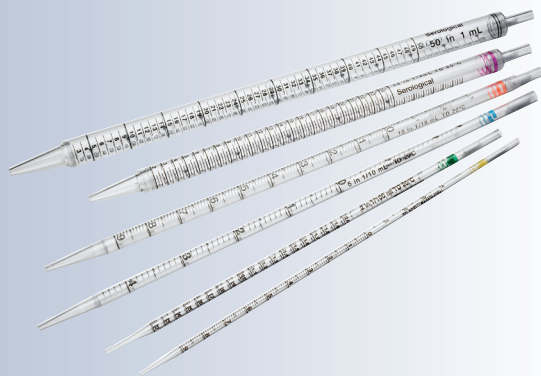
With hydrophobic polyester stopper.

Volumetric Accuracy $\pm 2\%$ ($\pm 3\%$ for 1 & 2ml) as by ASTM E394/ISO 12771

Non pyrogenic, non cytotoxic,
DNase/RNase free, BSE/TSE free

Individually wrapped in paper/plastic peel pack.

Gammasterile as by requirements of ANSI/AAMI/ISO 11137



Vol.	Increm.	Color Code	Code	pcs./bag	pcs./case
1 ml	1/0,01 ml	yellow	BOE 357770	100	1000
2 ml	1/0,01 ml	green	BOE 357771	100	1000
5 ml	1/0,10 ml	blue	BOE 357772	50	200
10 ml	1/0,10 ml	red	BOE 357773	50	200
25 ml	1/0,25 ml	magenta	BOE 357774	50	200
50 ml	1/1,00 ml	black	BOE 357775	25	100



CONICAL CENTRIFUGE TUBES, PP

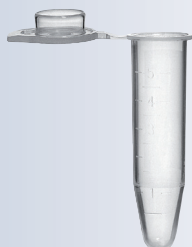
„BOECO Germany“ with blue screw cap, printed graduation and writing surface, free of RNA, DNA, RNase, DNase, Pyrogen, Endotoxin.

Gammasterile.

Max centrifugation: 15 ml tubes up to 17,000 RCF

50 ml tubes up to 20,000 RCF

Vol.	Size	Code	pcs./bag	pcs./case
15 ml	17x120	BOE 9640015	25	500
50 ml	30x115	BOE 9640050	25	500



MICRO CENTRIFUGE TUBES

PP, attached cap, natural, graduated, with writing area,

max. RCF 25,000 g, autoclavable at 121°C

Free of any detectable human DNA, DNase, RNase and PCR-inhibitors.

Capacity	Sterility	Code	pcs./bag	pcs./case
5,0 ml	nonsterile	BOE 04-252-1000	200	4.000
5,0 ml	sterile R	BOE 04-252-9000	200	4.000

DISPOSABLE CUVETTES

MACRO



SEMI-MICRO



Code	Description
BRA 759007	Disposable Macro Cuvettes, PS, Window: 10 x 35 mm, 10 mm light path Filling volume: min 2,5 / max 4,5 ml grouped by mold cavity number, neutral packing Wavelength: from 340 to 900 nm Packing: 100 pcs./box, 1000 pcs./carton
BRA 759017	Disposable Semi-Micro Cuvettes, PS, Window: 4,5 x 23 mm, 10 mm light path Filling volume: min 1,5 / max 3,0 ml grouped by mold cavity number, neutral packing Wavelength: from 340 to 900 nm Packing: 100 pcs./box, 1000 pcs./carton