



OPTICAL INSTRUMENTS

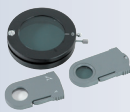
 **BOECO**
Germany

BIOLOGICAL MICROSCOPES

BOECO LABORATORY BINOCULAR MICROSCOPE MODEL BM-800



POLARISATION SET



PHASE CONTRAST KIT



EPI-FLUORESCENT ATTACHMENT

Specification BM-800:

- Optical System:** Infinite corrected system, field diameter 22 mm
Viewing Head: Bin- or Trinocular compensation free head, 30° inclined, 360° rotatable, Interpupillary distance 48 - 75 mm
Nosepiece: Backward quintuple revolving nosepiece
Eyepiece: Larger viewing area with extra wide field eyepiece EW 10X/22 mm
Objectives: BOECO Infinite corrected Plan Achromat Objectives 4x/0.10, 10x/0.25, 40x/0.65 (S), 100x/1.25 (S) (Oil)
Stage: Large sized double layer mechanical specimen stage 185 x 142 mm, Moving range 75 x 55 mm
Focusing: Coaxial coarse and calibrated fine focus control, fine division 0,001 mm, Coarse stroke 37,7mm/rotation fine stroke 0,1mm/rotation, mowing Range 24 mm safety autofocus stop unit.
Condenser: Swing condenser, N.A. 0,9/0,25
Field diaphragm: With aspherical condenser and Köhler illumination
Illumination: 5W LED illumination, brightness adjustable
Body / power: Modern and ergonomic body made from die-cast aluminium with inbuilt power supply 110-240 V, 50/60 Hz
Supplied with: Dust cover, immersion oil, green filter and instruction manual
Dimensions: 280 x 358 x 304/416 mm, net weight 9,3 / 9,9 kg

| Code | Description | Head | Plug |
|--------------|---------------|------------|------|
| BOE 8000.550 | BM-800/I/PL | Binocular | Euro |
| BOE 8000.551 | BM-800/I/PL | Binocular | US |
| BOE 8000.560 | BM-800/T/I/PL | Trinocular | Euro |
| BOE 8000.561 | BM-800/T/I/PL | Trinocular | US |

Accessories

| Code | Description |
|--------------|--|
| BOE 8000.301 | EW eyepiece 10x/22mm |
| BOE 8000.302 | EW eyepiece 10x/22mm with pointer |
| BOE 8000.303 | EW eyepiece 10x/22mm with micrometer |
| BOE 8000.552 | BOECO Infinite E Plan Achrom. Objective 4x |
| BOE 8000.553 | BOECO Infinite E Plan Achrom. Objective 10x |
| BOE 8000.559 | BOECO Infinite E Plan Achrom. Objective 20x |
| BOE 8000.554 | BOECO Infinite E Plan Achrom. Objective 40x (S) |
| BOE 8000.555 | BOECO Infinite E Plan Achrom. Objective 100x (S) (Oil) |
| BOE 8000.305 | Dark Field Condenser (Dry) NA 0,7-0,9 |
| BOE 8000.306 | Dark Field Condenser (Oil) NA 1,25-1,36 |
| BOE 1800.419 | Objective 100x plan-achrom. for Dark field cond. (Oil) |
| BOE 8000.325 | Simple Polarization set |
| BOE 8000.802 | 1x Video Attachment with C mount |
| BOE 8000.903 | Turret Annular Phase Contrast Kit, consisting of: Phase Contrast Infinity Plan-achromatic Objectives 10x,20x(S), 40x(S), 100x(S)(Oil), Turret Annular Phase, Contrast Condenser, Centering Telescope, Green Filter |
| BOE 8000.906 | Epi-Fluorescent Attachment B (Blue) BP460-495, G (Green) BP 510-550 Excitation Light Filter system, O Ordinary Light System, 100WHBO Ultra Hi-voltage Spherical Mercury Lamp, Barrier to resist the Ultraviolet light, Power Supply with Digital Display, AC Input 100-240 V |
| BOE 8000.923 | Infinite Plan Fluorescence Free Obj. 4x |
| BOE 8000.924 | Infinite Plan Fluorescence Free Obj. 10x |
| BOE 8000.925 | Infinite Plan Fluorescence Free Obj. 20x |
| BOE 8000.926 | Infinite Plan Fluorescence Free Obj. 40x |
| BOE 8000.927 | Infinite Plan Fluorescence Free Obj. 100x |
| BOE 8000.908 | U (ultraviolet) BP330-385 Excitation light filter system |
| BOE 8000.909 | V (violet) BP400-410 Excitation light filter system |

BOECO INVERTED BIOLOGICAL MICROSCOPE MODEL BIB-100

Specification BIB-100:

| | |
|-----------------|--|
| Optical System: | Infinite corrected system, field diameter 22 mm |
| Viewing Head: | Bin- or Trinocular Head, 30° inclined, 360° rotatable, Interpupillary Distance 48 - 75 mm |
| Nosepiece: | Quintuple revolving nosepiece |
| Eyepiece: | High-point, Extra Wide Field Eyepiece EW 10x/22 mm |
| Objectives: | LWD Infinite corrected Plan Achromat Objective 4x/0,1 WD 28 mm LWD Infinite corrected Plan Achromat Objective 40x/0,6 WD 2.1 mm Infinite corrected Plan Achromat Phase Objective 10x/0,25 WD 10 mm Infinite corrected Plan Achromat Phase Objective 20x/0,4 WD 5.1 mm |
| Condenser: | ELWD condenser N.A. 0,3. LWD 72 mm (without condenser 150 mm) |
| Centering | Centering Telescope 30 mm diam. Telescope Phase Annulus 10x - 20x Phase Annulus Plate |
| Stage: | Plain Stage 160 x 250 mm, Glass Insert Auxiliary Stage 70 x 180 mm Attachable Mechanical Ruler |
| Focusing: | Coaxial coarse and fine adjustment. Vertical objective movement, Coarse stroke 37.7 mm per rotation, Fine Stroke: 0,2 mm per rotation |
| Filter: | Diameter 45 mm, blue, green and ground glass |
| Illumination: | 3W LED lamp, brightness adjustable |
| Body: | Innovative stand structure |
| Power: | Inbuilt power supply 100-240 V, 50/60 Hz |
| Weight: | Net weight 10,0 / 10,5 kg |

Supplied with: Dust cover, immersion oil and instruction manual

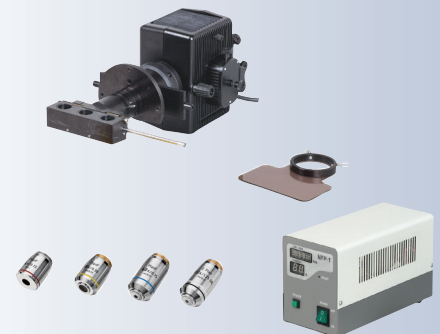
| Code | Description | Head | Plug |
|--------------|-------------|------------|------|
| BOE 5000.900 | BIB-100 | Binocular | Euro |
| BOE 5000.901 | BIB-100 | Binocular | US |
| BOE 5000.930 | BIB-100/T | Trinocular | Euro |
| BOE 5000.931 | BIB-100/T | Trinocular | US |

Optional Accessories

| Code | Description |
|--------------|--|
| BOE 5000.220 | Terasaki Holder |
| BOE 5000.221 | 35 mm diam. Petri dish holder |
| BOE 5000.222 | 54 mm diam. Slide glass holder |
| BOE 5000.906 | Inverted Fluorescent Attachment for BIB-100, without objectives |



HOLDERS



BOECO BINOCULAR MICROSCOPE MODEL BM-700

Our advanced biological Microscope for educational, teaching, life science and clinical applications. The Anti-Fungus treatment protects the optical system, objectives and eyepieces in high-humidity environments. The new designed F=200 mm Infinite Plan achromatic objectives provide a fully corrected image for clear visual and digital results.

Specification BM-700:

| | |
|-----------------|--|
| Optical system: | Siedentopf Binocular Head, 30° inclined, 360° rotatable, with high quality infinite optical system |
| Nosepiece: | Backward quadruple revolving nosepiece |
| Eyepiece: | Pair Eyepiece WF 10X /20 mm, diopter adjustable, with anti fungus treatment, Interpupillary Distance 50-75 mm |
| Objectives: | BOECO Anti Fungus Infinite Plan Achromat Objectives 4x, 10x, 40x, 100x (S, Oil) |
| Stage: | Double layer mechanical specimen stage 216 x 150 mm moving range 78 x 54 mm, Right hand stage handle |
| Focusing: | Low position, coaxial coarse and calibrated fine focus control, with graduation reading 2 microns per division. Total focusing range 24 mm, Safety stop unit |
| Condenser: | Sliding-in centerable Abbe Bright field condenser, N.A. 1,25, Integrated Iris diaphragm and filter tray |
| Illumination: | 3W LED lamp, Koehler illumination, brightness adjustable |
| Body /power: | Sturdy body with supportive rubber and inbuilt power supply 100 - 240 V, 50/60 Hz |
| Supplied with: | Dust cover, green filter, immersion oil and instruction manual |
| Dimensions: | 204 x 376 x 406 mm |
| Weight: | Net weight 6,4 / 7,2 kg |
| Packing: | Styrofoam shelf in a cardboard box |



**BACK HANDLE / POWER CORD
WRAP**



**ANTI FUNGUS TREATED
OBJECTIVES**



**KOEHLER ILLUMINATION /
SLIDING-IN ABBE BRIGHT FIELD
CONDENSER**



**BIG RACKLESS MECHANICAL STAGE WITH
ANTI SCRATCH GRAPHITE TREATMENT**

| Code | Description | Head | Plug |
|--------------|---------------|------------|------|
| BOE 7000.570 | BM-700/I/PL | Binocular | Euro |
| BOE 7000.571 | BM-700/I/PL | Binocular | US |
| BOE 7000.580 | BM-700/T/I/PL | Trinocular | Euro |
| BOE 7000.581 | BM-700/T/I/PL | Trinocular | US |

Objectives for BM-700

| Code | Description |
|--------------|---|
| BOE 7000.552 | BOECO Infinite Plan Achromatic AF Obj. 4x |
| BOE 7000.553 | BOECO Infinite Plan Achromatic AF Obj. 10x |
| BOE 7000.559 | BOECO Infinite Plan Achromatic AF Obj. 20x |
| BOE 7000.554 | BOECO Infinite Plan Achromatic AF Obj. 40x (S) |
| BOE 7000.555 | BOECO Infinite Plan Achromatic AF Obj. 100x (S) (Oil) |

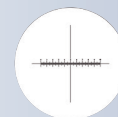


Accessories for BM-700

| Code | Description |
|--------------|---|
| BOE 7000.303 | WF eyepiece 10x/20mm with Micrometer |
| BOE 7000.302 | WF eyepiece 10x/20mm with Pointer |
| BOE 7000.307 | WF eyepiece 10x/22mm |
| BOE 7000.304 | Eyeiece 15x/16mm |
| BOE 7000.305 | Dark Field Condenser (Dry) NA 0,7-0,9 |
| BOE 7000.306 | Dark Field Condenser (Oil) NA 1,36-1,25 |
| BOE 7000.325 | Polarisation attachment |
| BOE 7000.903 | Phase Contrast kit, dial type. Consisting of Phase Contrast Infinite Plan-achromatic Objectives 10x, 40x, 100x(S)(Oil), Turret Annular Phase Contrast Condenser, Green Filter |
| BOE 7000.906 | Epi-Fluorescent attachment, power supply, mercury lamp, blue and green filter |
| BOE 7000.907 | Epi-Fluorescent attachment FL-LED, with B excitation filter (465-475 nm blue) and LED lamp |



EYEPIECE WITH POINTER



EYEPIECE WITH MICROMETER



DARK FIELD CONDENSER DRY AND OIL TYPE



POLARIZATION ATTACHMENT



PHASE CONTRAST CONDENSER (DIAL)



BM-700 WITH FL-LED

BOECO BINOCULAR MICROSCOPE MODEL BM-250/I/SP

Specification BM-250/I/SP:

| | |
|-----------------|---|
| Optical System: | Siedentopf Viewing Head, 30° inclined, 360° rotatable, with Infinite corrected optical system. Interpupillary Distance 47 - 78 mm, diopter adjustable (left side) |
| Nosepiece: | Backward quadruple revolving nosepiece |
| Eyeiece: | Pair Eyeiece WF 10x /20 mm Wide field |
| Objectives: | BOECO Anti Fungus Infinite Semi-plan Achromat Objectives F=180 mm: 4x, 10x, 40x (S), 100x (S) (Oil) |
| Stage: | Rackless Double layer mechanical specimen stage 150 x 139 mm, moving range 75 x 52 mm, Right hand stage handle |
| Focusing: | Low position, coaxial coarse and calibrated fine focus control, with graduation reading 2 microns per division. Total focusing range 25 mm, Safety stop unit. |
| Condenser: | Abbe Bright field condenser, N.A. 1,25, Integrated Iris diaphragm and filter tray with rack & pinion height adjustment |
| Illumination: | S-LED, brightness adjustable |
| Body / power: | Sturdy body with supportive rubber and inbuilt power supply, 100-240 V, 50/60 Hz |
| Supplied with: | Dust cover, green filter, immersion oil, instruction manual |
| Dimensions: | 208(W) x 266(D) x 370(H) mm |
| Weight: | Net weight 6,9 / 7,3 kg |
| Packing: | Styrofoam shelve in a cardboard box |

| Code | Description | Head | Plug |
|--------------|---------------------|------------|------|
| BOE 2500.200 | Model BM-250/I/SP | Binocular | Euro |
| BOE 2500.201 | Model BM-250/I/SP | Binocular | US |
| BOE 2500.230 | Model BM-250/T/I/SP | Trinocular | Euro |
| BOE 2500.231 | Model BM-250/T/I/SP | Trinocular | US |

| | |
|--------------|--|
| BOE 3000.512 | BOECO Infinite Semi-Plan Achromatic AF Obj. 4x |
| BOE 3000.514 | BOECO Infinite Semi-Plan Achromatic AF Obj. 10x |
| BOE 3000.516 | BOECO Infinite Semi-Plan Achromatic AF Obj. 40x(S) |
| BOE 3000.517 | BOECO Infinite Semi-Plan Achromatic AF Obj. 100x (S) (Oil) |

EW 10X/20MM EYEPIECES



ANTI FUNGUS TREATED OBJECTIVES



RACKLESS MECHANICAL STAGE

BOECO BINOCULAR MICROSCOPE MODEL BM-190 SP

Specification BM-190/SP:

Magnification: 40X- 100x
 Optical system: Siedentopf Viewing Head, 30° inclined, 360° rotatable, Interpupillary Distance 47 - 78 mm, diopter adjustable (left)
 Nosepiece: Backward quadruple revolving nosepiece
 Eyepiece: Pair Eyepiece WF 10x /18 mm Widefield
 Objectives: BOECO Semi-plan Achromat DIN Objectives 4x/0.10, 10x/0.25, 40x/0.65 (S), 100x/1.25 (S) (Oil)
 Stage: Double layer mechanical specimen stage. 140 x 140 mm moving range 75 x 50 mm, Right hand stage handle
 Focusing: Low position, coaxial coarse and calibrated fine focus control, with graduation reading 2 microns per division. Total focusing range 25 mm, Safety stop unit.
 Condenser: Abbè Brightfield condenser, N.A. 1,25, Integrated Iris diaphragm and filter tray. With rack & pinion height adjustment
 Illumination: S-LED, brightness adjustable.
 Body / power: Sturdy body with supportive rubber and inbuilt power supply 100-240 V, 50/60 Hz
 Supplied with: Dust cover, green filter, immersion oil, instruction manual
 Dimensions: 208(W) x 266(D) x 370(H) mm
 Weight: Net weight 6,9 / 7,2 kg
 Packing: Styrofoam shelve in a cardboard box



TRINOCULAR MODEL
BM-190/T/SP



POWER CORD WRAP IN THE BACK

| Code | Description | Head | Plug |
|--------------|-------------|------------|------|
| BOE 1900.200 | BM-190/SP | Binocular | Euro |
| BOE 1900.201 | BM-190/SP | Binocular | US |
| BOE 1900.230 | BM-190/T/SP | Trinocular | Euro |
| BOE 1900.231 | BM-190/T/SP | Trinocular | US |

Objectives for BM-190/SP, BM-180/SP

| Code | Description |
|--------------|---|
| BOE 1800.413 | BOECO Black Semi-Plan Achromat DIN Obj. 4x |
| BOE 1800.414 | BOECO Black Semi-Plan Achromat DIN Obj. 10x |
| BOE 1800.418 | BOECO Black Semi-Plan Achromat DIN Obj. 20x |
| BOE 1800.415 | BOECO Black Semi-Plan Achromat DIN Obj. 40x (S) |
| BOE 1800.416 | BOECO Black Semi-Plan Achromat DIN Obj. 100x (S)(Oil) |

Eyepieces for BM-190, BM-180, BM-120, BM-117, N-10

| Code | Description |
|--------------|---|
| BOE 1800.301 | Wide Field Eyepiece WF 10x, pc. |
| BOE 1800.302 | Wide Field Eyepiece WF 10x with Pointer, pc. |
| BOE 1800.303 | Wide Field Eyepiece WF 10x with 0,1 Micrometer, pc. |
| BOE 1800.304 | Eyepiece P 16x, pc. |



Dark Field Condensers for BM-180/SP, BM-190/SP

| Code | Description |
|--------------|---|
| BOE 1800.305 | Dark Field Condenser (Dry) NA 0-7-0,9 |
| BOE 1800.306 | Dark Field Condenser (Oil) NA 1,25-1,36 |
| BOE 1800.412 | Achromatic Objective 100x for Dark Field (Oil) with cone diaphragm |
| BOE 1800.417 | Plan-Achromatic Objective 100x for Dark Field (Oil) with Iris Diaphragm |



Phase Contrast Kits for BM-180/SP, BM-190/SP

| Code | Description |
|--------------|---|
| BOE 1800.902 | Annular Phase Contrast Kit, consisting of: Simple Phase Contrast Achromatic Objectives & Diaphragms PH10x, PH40x & PH100x, Centering Telescope |
| BOE 1800.903 | Turret Annular Phase Contrast Kit, consisting of: Phase Contrast Plan-achromatic Objectives 10X, 20x(S), 40x(S), 100x(S)(Oil), Turret Annular Phase Contrast Condenser, Centering Telescope, Green Filter |
| BOE 1800.904 | Sliding Phase Contrast Kit, consisting of: Sliding Phase Contrast Condenser, Green Filter Plan achromatic Phase Contrast Objectives PH10x, PH40x, Centering Telescope |



Epi-Fluorescent Attachments for BM-180/SP, BM-190/SP

| Code | Description |
|--------------|--|
| BOE 1800.906 | Epi-Fluorescent attachment complete set B (Blue), G (Green) Excitation Light Filter system, O Ordinary Light System, 100WHBO Ultra Hi-voltage Spherical Mercury Lamp, Barrier to resist the Ultraviolet light, Power Supply with Digital Display, AC Input 100-240 V, Fluorescent Free Objective 4x, 10x, 40x (S), 100x (S)(Oil), Fluorescent Free Oil |
| BOE 1800.908 | U (ultraviolet) Excitation light filter system |
| BOE 1800.909 | V (violet) Excitation light filter system |



BOECO ROUTINE BINOCULAR MICROSCOPE MODEL BM-120

| | |
|-----------------|---|
| Magnification: | 40x- 100x |
| Optical System: | Compensation Free Binocular Head, 30° inclined, 360° rotatable, Interpupillary Distance 55 - 75 mm |
| Nosepiece: | Quadruple revolving nosepiece |
| Eyepiece: | Pair Eyepiece WF 10x /18 mm Wide field |
| Objectives: | BOECO Achromat DIN Objectives 4x/0.10, 10x/0.25, 40x/0.65 (S), 100x/1.25 (S) (Oil) |
| Stage: | Double layer mechanical specimen stage 140 x 140 mm moving rane 75 x 50 mm, |
| Focusing: | Coaxial coarse and Fine Focus Adjustment, Range 20 mm fine Division 2 microns, safety stop unit |
| Condenser: | Abbe Brightfield condenser, N.A. 1,25, Integrated iris diaphragm and filter tray with rack & pinion height adjustment |
| Illumination: | S-LED, brightness adjustable |
| Body /power: | Sturdy body with supportive rubber and inbuilt power supply 100-240 V, 50/60 Hz |
| Supplied with: | Dust cover, green filter, immersion oil and instruction manual |
| Dimensions: | 196 x 344 x 349 mm, net weight 5,6 kg |

| Code | Description | Head | Plug |
|--------------|------------------------------|-----------|------|
| BOE 1200.100 | Model BM-120 | Binocular | Euro |
| BOE 1200.101 | Model BM-120 | Binocular | US |
| BOE 1200.005 | Mirror attachment for BM-120 | | |



OPTIONAL MIRROR-ATTACHMENT

STUDENT MICROSCOPES



BOECO STUDENT MICROSCOPES MODEL BM-117

Optical System: Binocular or Monocular Head, 30° inclined, 360° rotatable, interpupillary distance 48 - 75 mm
 Nosepiece: Backward quadruple revolving nosepiece
 Eyepiece: Wide field Eyepiece WF 10x /18 mm
 Objectives: Achromatic DIN Objectives
 4x/0.10, 10x/0.25, 40x/0.65 (S), 100x/1.25, (Oil)(S)
 Stage: Double Layers mechanical stage 132 x 142 mm moving range 75 x 40 mm
 Focusing: Coaxial Coarse & Fine Adjustment System
 Range 24 mm, Fine Division 0,004 mm
 Condenser: Abbe Condenser, N.A. 1,2, with iris diaphragm and filter
 Illumination: S-LED, light brightness adjustable
 Body / power: Sturdy body with supportive rubber and inbuilt power supply 110-240 V, 50/60 Hz
 Supplied with: Dust cover, green filter, spare fuses, Immersion oil
 Dimensions: 170 x 310 x 355 mm, netweight 4,4 kg
 Packing: Styrofoam shelf in a cardboard box

| Code | Description | Head | Plug |
|--------------|-------------|-----------|------|
| BOE 1170.100 | BM-117 | Binocular | Euro |
| BOE 1170.101 | BM-117 | Binocular | US |
| BOE 1170.110 | BM-117 | Monocular | Euro |
| BOE 1170.111 | BM-117 | Monocular | US |

BOECO STUDENT MONOCULAR MICROSCOPE MODEL BM-1

Specification:

Optical system: Monocular Head, 30° inclined,
 Nosepiece: Triple revolving nosepiece
 Eyepiece: Pair Eyepiece WF 10x /15 mm, WF 25x/9 mm
 Objectives: Achromatic Objectives
 4x/0.10, 10x/0.25, 40x/0.65
 Stage: Plain stage with Slide Clips 95 x 95 mm
 Focusing: Coaxial coarse and Fine Adjustment
 Condenser: N.A. 0.65 with Disc Diaphragm
 Illumination: 0,1W LED, Brightness adjustable,
 + upper USB LED Lamp
 Supplied with: Dust cover, spare fuse, manual
 Power: AC/DC adapter 100-240 V, 50/60 Hz, Output 5 V, 500 mA
 Dimensions: 126x186x305 mm, net weight 1,9 kg
 Packing: Styrofoam shelf in a cardboard box



| Code | Description | Head | Plug |
|--------------|-------------|-----------|----------------|
| BOE 1111.010 | BM-1 | Monocular | EU and US plug |

optional

| Code | Description |
|--------------|---------------------------|
| BOE 1111.100 | Achromatic Objective 100x |

Objectives for BM-120 and BM-117, BM-1

| Code | Description |
|--------------|---|
| BOE 1800.403 | BOECO DIN Achromatic Objective 4x |
| BOE 1800.402 | BOECO DIN Achromatic Objective 10x |
| BOE 1800.409 | BOECO DIN Achromatic Objective 20x |
| BOE 1800.404 | BOECO DIN Achromatic Objective 40x (S) |
| BOE 1800.406 | BOECO DIN Achromatic Objective 100x (S) (Oil) |



STEREO MICROSCOPES

BOECO ZOOM STEREO MICROSCOPE MODEL BSZ-405

Specification BSZ-405:

| | |
|-------------------|--|
| Optical system: | Binocular head inclined at 45° Interpupillary Distance 55 - 75 mm Eyepiece dioptic adjustment range $\pm 5D$ |
| Working distance: | 97 mm |
| Field of View: | 20,0 to 4.4 mm diam. |
| Eyepiece: | EWF 10x/20 mm eyepieces |
| Zoom Optics: | 1X to 4,5x , Zoom ratio 1:4,5 |
| Illumination: | 2-way illumination LED 1,2W Reflected (upper) illumination LED 0,7W Transmitted (lower) illumination |
| Stage Plate: | Frosted glass stage plate 90 mm and black/white reversible stage plate |
| Base: | Stable 262 x 185 mm base, fitted with anti-skid rubber feet. Main Body 360° rotatable |
| Power: | 100-240 V, 50/60 Hz |
| Dimensions: | 185 (W) x 262 (L) x 315 (H) mm, Net weight 4,3 / 4,4 kg |

| Code | Description | Head | Plug |
|--------------|-------------|------------|------|
| BOE 4050.000 | BSZ-405 | Binocular | Euro |
| BOE 4050.001 | BSZ-405 | Binocular | US |
| BOE 4050.300 | BSZ-405/T | Trinocular | Euro |
| BOE 4050.301 | BSZ-405/T | Trinocular | US |

optional

| Code | Description |
|--------------|---|
| BOE 3460.020 | Wide Field Eyepiece WF 20x/12 with diopter adjustment |
| BOE 4050.002 | Auxiliary Objective 2x, for BSZ-405 and BS-80 |
| BOE 4050.007 | Auxiliary Objective 0,75x, for BSZ-405 and BS-80 |

BOECO ZOOM STEREO MICROSCOPE MODEL BST-606

Specification BST-606:

| | |
|-------------------|--|
| Optical system: | Binocular head inclined at 45° Interpupillary distance 55 - 75 mm Eyepiece dioptic adjustment range $\pm 5D$ |
| Working distance: | 115 mm |
| Field of View: | 28,0 to 4,5 mm diam. |
| Eyepiece: | EWF 10x/22 mm eyepieces with eyeshadow |
| Zoom Optics: | 0,8x to 5x, Zoom ratio 6,3:1 |
| Illumination: | 2-way illumination switch allows upper and lower illumination Transmitted (lower) LED light source Incident (upper) LED light source |
| Stage Plate: | 100 mm \varnothing frosted glass stage plate and black/white reversible stage plate |
| Base: | Stable 300x225 mm base, fitted with anti-skid rubber feet. Main Body 360° rotatable |
| Power: | 100-240 V, 50/60 Hz |
| Dimensions: | 300 (W) x 225 (L) x 300 (H) mm, Net weight 5,4 kg |

| Code | Description | Head | Plug |
|--------------|-------------|------------|------|
| BOE 6060.000 | BST-606 | Binocular | EURO |
| BOE 6060.001 | BST-606 | Binocular | US |
| BOE 6060.300 | BST-606/T | Trinocular | Euro |
| BOE 6060.301 | BST-606/T | Trinocular | US |

optional

| | |
|--------------|---|
| BOE 3460.020 | Wide Field Eyepiece WF 20x/12 w/ diopter adjustment |
| BOE 6060.002 | Auxiliary Objective 2x, for BST-606 |
| BOE 6060.005 | Auxiliary Objective 0,5x, for BST-606 |



BSZ-405 TRINOCULAR WITH DIGITAL MICROSCOPE CAMERA B-CAM10





Specifications:

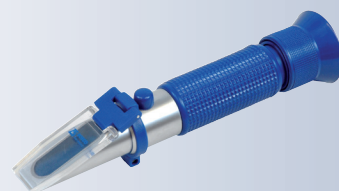
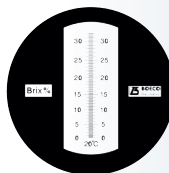
| Model: | B-CAM16 | B-CAM10 | B-CAM2 | B-CAM1080PHB |
|----------------------------|---|---------------------------------|--|--|
| Code | BOE 1900.16000 | BOE 1900.10000 | BOE 1900.02000 | BOE 1900.05000 |
| Camera | Color CMOS 16 MP | Color CMOS 10 MP | Color CMOS 2 MP | Color CMOS 5 MP |
| Application software | B-View on disk (12 cm) | B-View on disk (12 cm) | B-View on disk (8 cm) | B-View on disk (12 cm) |
| Lens adapter | 0.50x manual focusable | 0.50x manual focusable | N/A | 0.50x manual focusable |
| Eye tube adapter ring | 23.2 mm to 30.0mm | 23.2 mm to 30.0mm | 23.2 mm to 30.0mm | 23.2 mm to 30.0mm |
| Calibration slide | 1mm/100 Div.x 0,01mm | 1mm/100 Div.x 0,01mm | N/A | 1mm/100 Div.x 0,01mm |
| Spectral Range (IR filter) | 380-650nm | 380-650nm | 380-650nm | 380-650nm |
| Sensor Size (mm) | 1/2.33"(6.18x4.67) | 1/2.3"(5.98x4.58) | 1/3.2" (4.48x3.36) | 1/1.8" (6.22x3.36) |
| Pixel Size (µm) | 1.335x1.335 | 1.67x1.67 | 2.8x2.8 | 2.4x2.4 |
| FPS/Resolution | 16@4632x3488 30@2320x1740 27@1536x1160 | 7.2@3584x2746 24.5@1792x1372 | 5@1600x1200 7.5@1280x1024 20@800x600 22@640x480 | 30@1920x1080 (HDMI) 25@1920x1080 (WIFI) |
| USB Interface | USB 3.0 (USB 2.0) | USB 3.0 (USB 2.0) | USB 2.0 (USB 3.0) | USB 2.0 (USB 3.0) |
| Binning | 1x1, 2x2, 3x3 | 1x1, 2x2, 4x4 | 1x1, 2x2, 3x3 | N/A |
| Exposure Mode | ROI Auto & Manual input | ROI Auto & Manual input | ROI Auto & Manual input | Auto & Manual |
| Exposure Time | 0.2~2000ms | 0.1~2000ms | 0.244~2000ms | 0.122~250ms |
| White Balance | ROI White Balance/ Manual Temp Tint Adjustment | | | N/A |
| Color Rendering Tech: | Ultra FineTM Color Engine | | | N/A |
| Recording System | Still Picture and Movie | | | |
| Capture/Control API | Native C/C++, C#, DirectShow, Twain and Labview | | | |
| PC Requirements: | CPU equal to Intel Core2 2.8GHz or higher, 2GB Ram Memory or more. USB 3.0 High speed port, 17" Display or larger | | | |

B-View is a professional application software integrated with camera control, image capture & process, image browse, image measurement and analysis

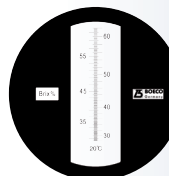
REFRACTOMETER

BOECO HAND REFRACTOMETER

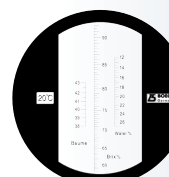
| Code | Description |
|-----------|---|
| BOE 30103 | Saccharic Concentration 0-32 % Resolution: 0,2 % |



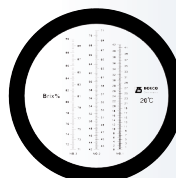
| Code | Description |
|-----------|--|
| BOE 30104 | Saccharic Concentration 28-62 % Resolution: 0,2 % |



| Code | Description |
|-----------|---|
| BOE 30106 | Saccharic Concentration 58-90% 58-90% Brix, 38°-43°Be°, 17-27% water Resolution: 0,5 % Brix, 0,5° Be°, 1% water (Sugar content, Baume and Water content) |



| Code | Description |
|-----------|---|
| BOE 30107 | Saccharic Concentration 0-90 % (3 ranges) 0-42%, 42-71%, 71-90% Resolution: 0,2 % |



| Code | Description |
|-----------|--------------------------------------|
| BOE 30202 | Salinity 0-28 % Resolution: 0,2 % |



| Code | Description |
|-----------|---|
| BOE 30301 | Protein in Serum 0-12g/dl / 0,2 g/dl Urine Gravity 1.000-1.040 sg / 0,002 sg |



DIGITAL HAND REFRACTOMETER

with Automatic Temperature Compensation (ATC), large backlit color tdt display, multi-scale, dual temperature conversion
Dimensions: 145x67x38 mm, batteries included (AAA, 2 pcs.)

| Code | Description |
|-----------|--|
| BOE 32345 | Range: 0-45 % Brix Resolution: 0,1% Accuracy: ± 0,2 % Refractive Index: 1.3330 - 1.4098 Resolution: 0,0001 Accuracy: ± 0,0003 |
| BOE 32395 | Range: 0-95 % Brix Resolution: 0,1% Accuracy: ± 0,5 % Refractive Index: 1.3330 - 1.5400 Resolution: 0,0001 Accuracy: ± 0,0005 |



BOECO ABBE REFRACTOMETER

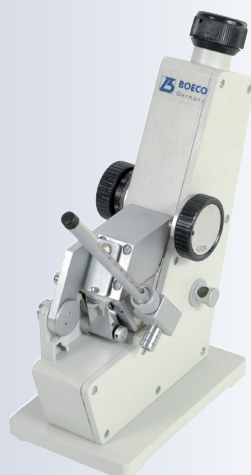
complete with: 1 x set special thermometer (with protective shield) 1 pc.
Standard Specimen, 1 x screw driver, 1 x instruction manual., 1 x button cell

Specification:

| | |
|--|-----------------|
| Measuring range of ND: | 1.3000-1.7000 |
| Measuring accuracy of ND (room temperature): | ± 0.0002 |
| Minimum scale value for ND: | 0.0005 |
| Minimum scale value for the concentration: of sugar content (%) | 0.25 |
| Measuring range of the concentration: of sugar content (%) | 0-95 |
| Magnification of telescopic system: | 2x |
| Magnification of reading system: | 30x |
| Weight of the instrument (kg): | 2,6 |
| Dimensions (mm): | 100 x 200 x 240 |

Code**Description**

| | |
|-----------|--|
| BOE 32200 | ABBE Refractometer, with aluminium carrying case |
|-----------|--|

**BOECO DIGITAL ABBE REFRACTOMETER**

This instrument can widely be used in petroleum, chemical, pharmaceutical, sugar refining and food industries, as well as in related colleges, universities and scientific research institutions for measuring the refractive index ND of transparent or subtransparent liquid or solid substance. This instrument can also be used to measure Brix (BX) of the sugar solution and to correct the affect of temperature on the Brix automatically.

In addition the instrument can display the temperature of the sample. Complete with: 1 x standard sample (standard block), 1 x inner - hexagon spanner, 3 x Illuminating Bulb, 1 x Plastic Cover Hood, 3 x fuses, 1 x instruction manual

Specification:

| | |
|--|-----------------|
| Measuring range | |
| Refractive index ND: | 1.3000-1.7000 |
| Brix BX - TC: | 0-95 % |
| Brix BX: | 0-95 % |
| Measuring accuracy | |
| Refractive index ND: | ± 0.0002 |
| Brix BX - TC: | ± 0.1 % |
| Brix BX: | ± 0.1 % |
| Temperature | |
| Temperature displaying range: | 0-50°C |
| Correcting range of BX versus temperature: | 15-45°C |
| Weight (kg): | 12,0 |
| Dimensions (mm): | 330 x 180 x 380 |

Code**Description**

| | |
|-----------|---|
| BOE 32400 | Digital ABBE Refractometer, 220 V with aluminium carrying case |
| BOE 32401 | Digital ABBE Refractometer, 110 V with aluminium carrying case |

