

BOECO UV/VIS SPECTROPHOTOMETER MODEL S-26

- ▶ Concentration and kinetic measurements
- ▶ Spectrum Scanning from 198 to 1000 nm
- ▶ Uses pulsed Xenon lamp
- ▶ Quantitation using up to 6 standards
- ▶ 200 method memory (50 per mode)

The new BOECO S-26 is a advanced measuring system with modes for Photometrics, Concentration, Quantitation, Kinetics and Scanning. The S-26 will meet the demands of a wide range of applications especially those in the clinical, veterinary environmental, general QC and performance testing areas.

With a memory capacity of 50 methods for each mode, the fully open operating system ensures compatibility with reagent kits from most manufacturers, as well as enabling full customisation to the operators's choice of chemistries and operating procedures.

The simple to use but feature rich spectrophotometer can be adapted to meet your current and future requirements through it's novel customisable menus. Activating the Supervisors Security functions, that enable that all the Set-up options to be locked without the entry of a security code number, can further enhance the integrity of your work.

In the Photometrics mode, Absorbance, Transmission and Wavelength are displayed simultaneously on the readout so no changing is required. Simple concentration measurements using a single standard or factor can be made in the Concentration mode. A Quantitation mode allows more complex concentration methods to be programmed, using up to six standards to create a calibration curve. For each curve fit option a linearity correlation co-efficient is calculated.

A real-time graphical display of Kinetic measurements is shown along with the calculated concentration vale and other relevant data. The Spectrum Scanning mode allows scans to be made across any selected portion of the 198 to 1000 nm range. The auto-ranging Absorbance axis allows scans to be commenced with no prior knowledge of the peak Absorbance level expected.

The S-26 has an analogue output that can be used to drive chart recorders and other analogue recording or conversion devices, as well as a bi-directional RS 232 serial port for connection to serial printers and computers.

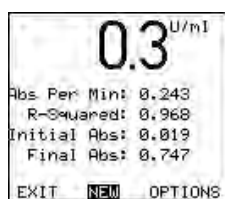
The S-26 software allows full emulation of the instrument functions on a PC including the import of results and download of methods. An electrically heated cuvette holder and control unit is available, as well as a water heated cuvette holder and a thermostatically controlled water circulator. The external programmable sipper pump ensures faster and safer sample handling.

The large sample compartment enables a wide range of sampling devices to be fitted. Cuvette holders from 10 mm to 100 mm in path length, a four-position rotary cuvette holder, and test tubes from 12.5 to 25 mm diameter can all be accommodated.

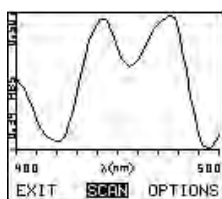
| Code | Description |
|-------------|--|
| BOE 8631501 | Model S-26 Spectrophotometer, supplied with a pack of 100 pcs UV/Visible 10x10mm disposable cuvettes, mains lead, 10 x 10 mm cuvette holder, manual and PC application Software on CD-ROM, 230V, 50/60 Hz. |
| BOE 8631531 | Model S-26 Spectrophotometer, but 110V, 60Hz |



MAIN MENU



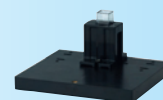
KINETIC RESULTS



WAVELENGTH SCAN



S-26
UV/VIS



10MM CUVETTE HOLDER
(SUPPLIED AS STANDARD WITH PRODUCT)

Instrument Specification:

| | |
|-----------------------------|--|
| Wavelength Range: | 198 to 1000nm |
| Resolution: | 1nm |
| Accuracy: | ±2nm |
| Spectral Bandwidth: | 8nm (6nm over UV range) |
| Absorbance Range: | -0.300 to 1.999A |
| Transmittance Range: | 0 to 199.9% |
| Concentration Range: | -300 to 1999Conc. |
| Selectable Resolution: | 1, 0.1, 0.01 or 0.001 |
| Calibration: | Blank with a single standard or factor |
| Memory: | 50 methods |
| Quantitation Range: | -300 to 1999Conc. |
| Selectable Resolution: | 1, 0.1, 0.01 or 0.001 |
| Calibration: | Blank with up to 6 standards |
| Curve Correction: | Linear regression, inter - polation or linear regression through zero |
| Memory: | 50 methods incl. calibration curve |
| Kinetics: | Graphical and calculated concentration value |
| Selectable Resolution: | 1, 0.1, 0.01 or 0.001 |
| Calibration: | Against standard and factor |
| Correlation Factor: | R ² displayed with result |
| Memory: | 50 methods and 4 graphed results |
| Spectrum: | any range between 198 and 1000 nm |
| Scan Data Internal: | 1, 2 or 5 nm selectable |
| Analysis: | Absorbance and wavelength of peaks and valleys |
| Memory: | 50 methods and 4 scans |
| GLP: | Real time clock and calender Operator ID Supervisor security (locks all set up parameters) Method display lock |
| Readout:Custom | LCD Graphics |
| Outputs: | Analogue (0 to 1.999V d.c.) RS232 serial port |
| Light source: | Xenon up to 2W, 400-600V |
| Operating Temperature: | 5°C to 40°C |
| Maximum | RH:80% |
| Input voltage: | 115/230V a.c. -20% +10% 50/60Hz |
| Input power: | <50W |
| Size: | 365(w)x272(d)x160(h) mm |
| Weight: | 6kg |